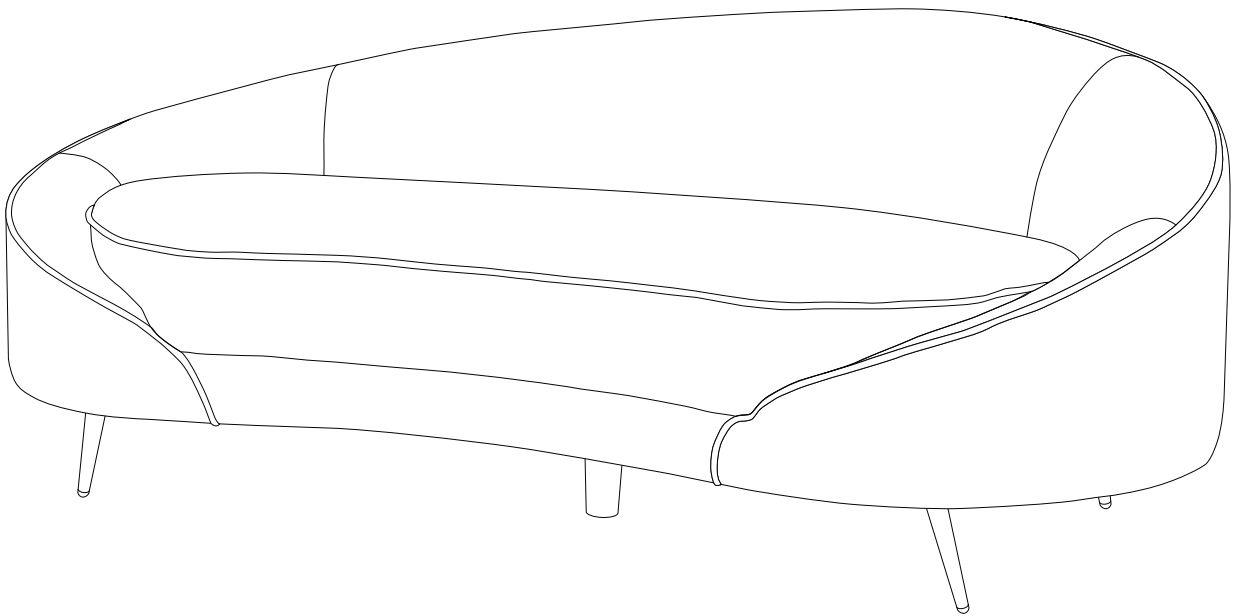
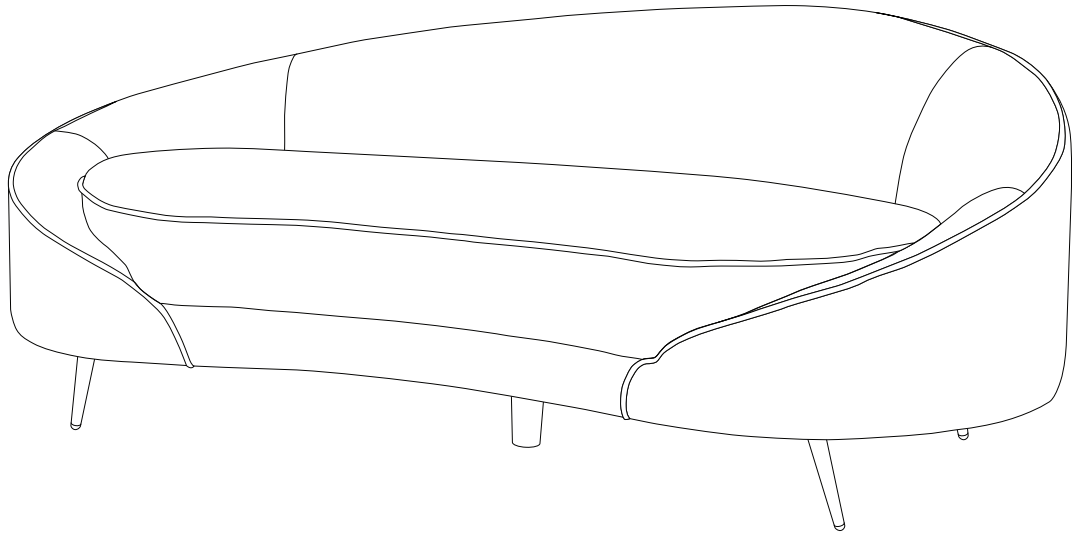


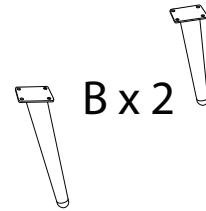
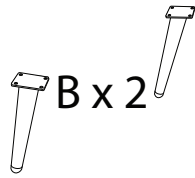
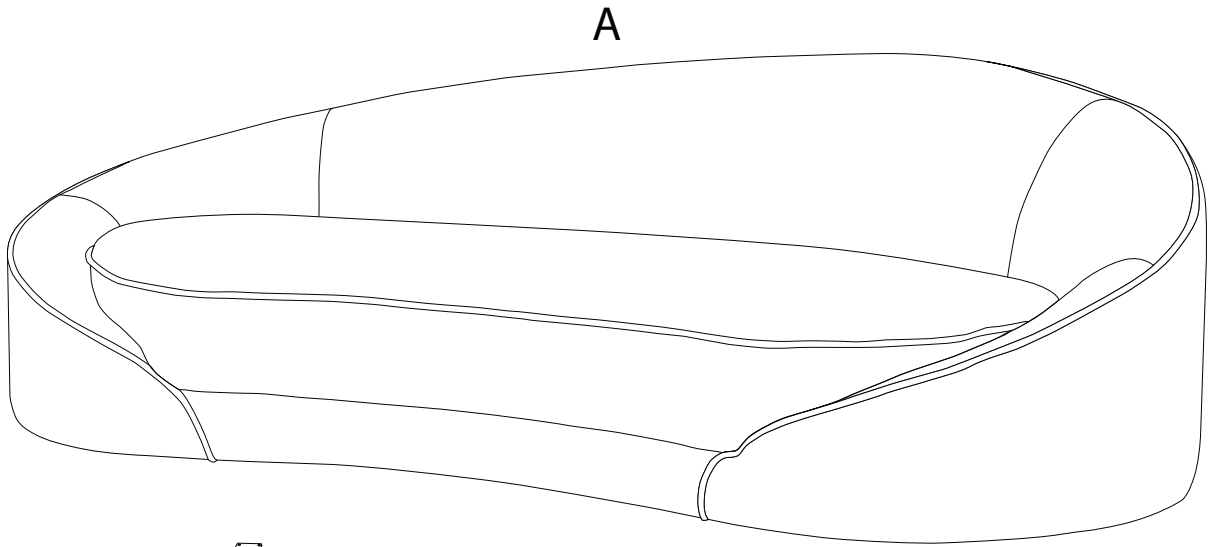
SAVAR





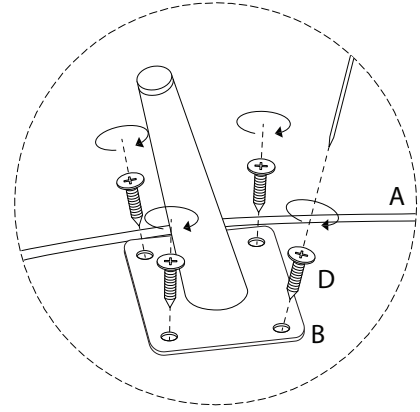
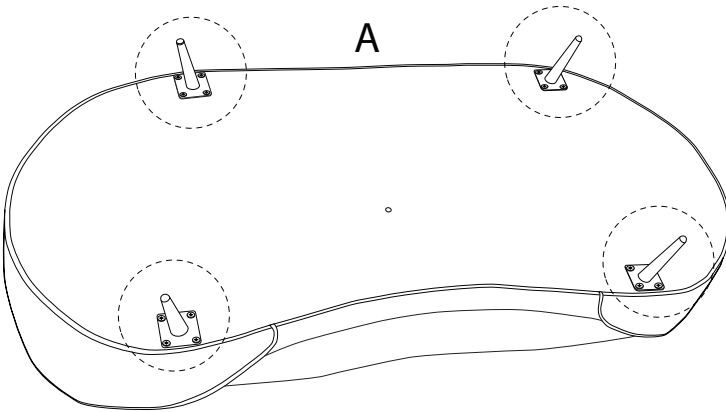
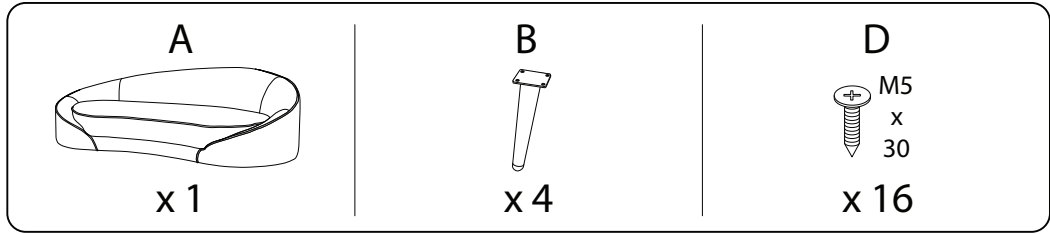
Assembly instructions for step 1/3:

- Tools:** A screwdriver is shown as the required tool, while a power drill is crossed out with a diagonal line, indicating it should not be used.
- Warning:** A warning triangle with an exclamation mark is positioned to the right of the tool icons.
- Time:** A clock icon is shown with the text "25'" below it, indicating the estimated assembly time for this step.
- Personnel:** An icon of a person is shown with the number "2" below it, indicating that two people are required for this step.
- Diagram:** A diagram shows a rectangular block being placed on a textured surface. A second block is shown next to it, crossed out with a diagonal line, indicating that the second block should not be placed on top of the first one.



A	B	C	D
			<p>M5 x 30</p>
x 1	x 4	x 1	x 16

1



2

